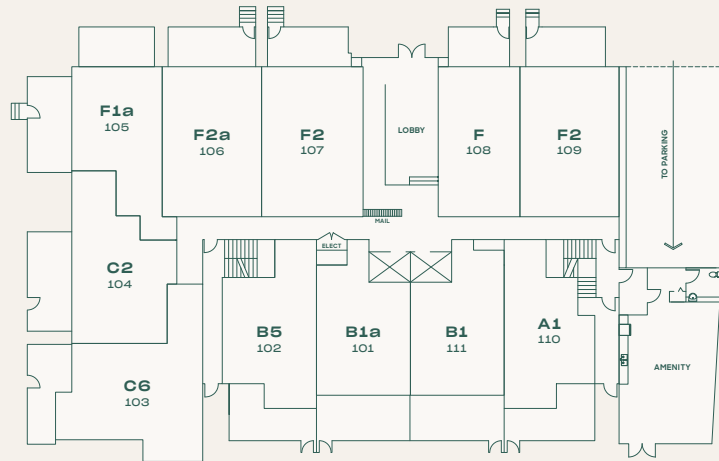
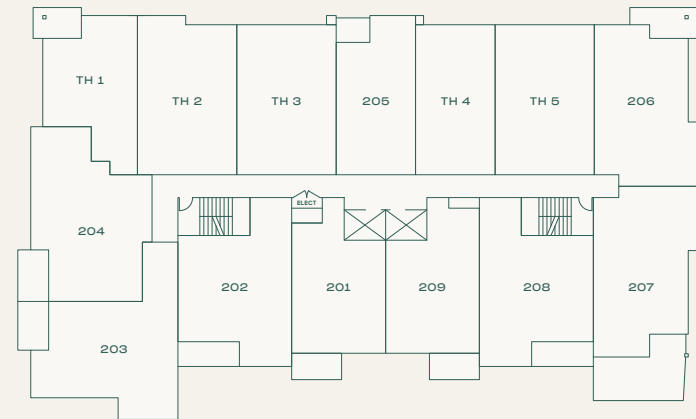


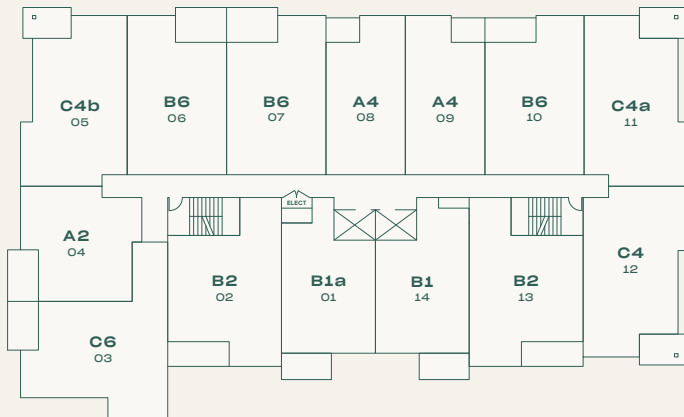
LEVEL 1



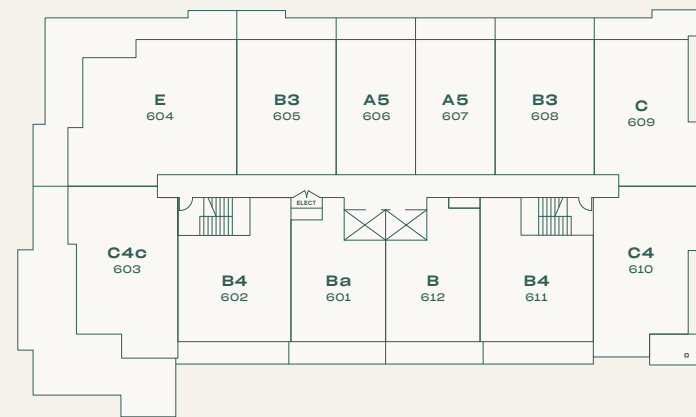
LEVEL 2

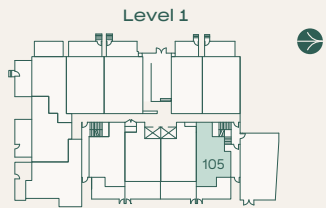


LEVELS 3-5



LEVEL 6



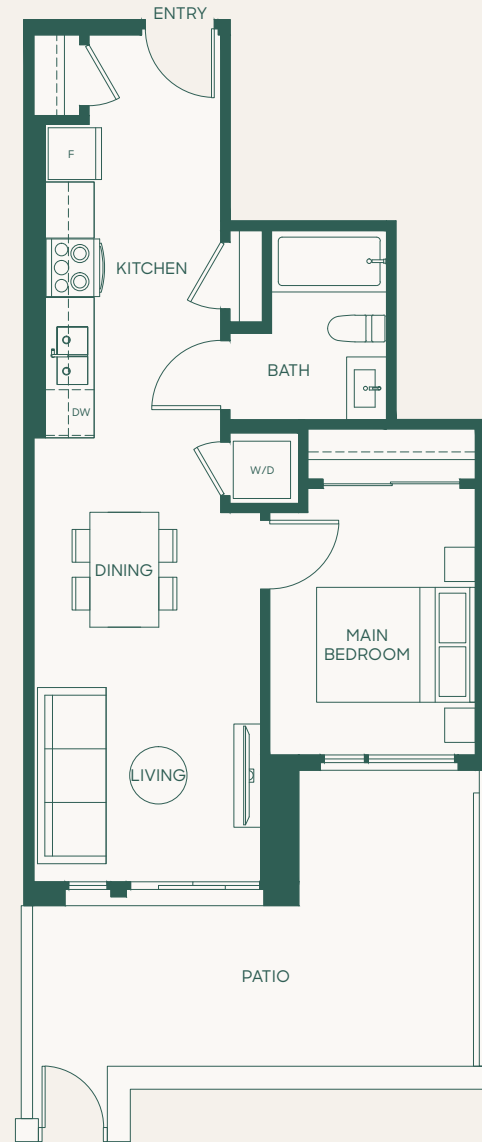


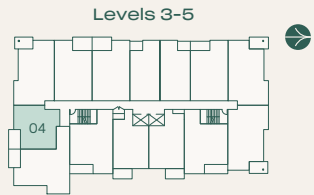
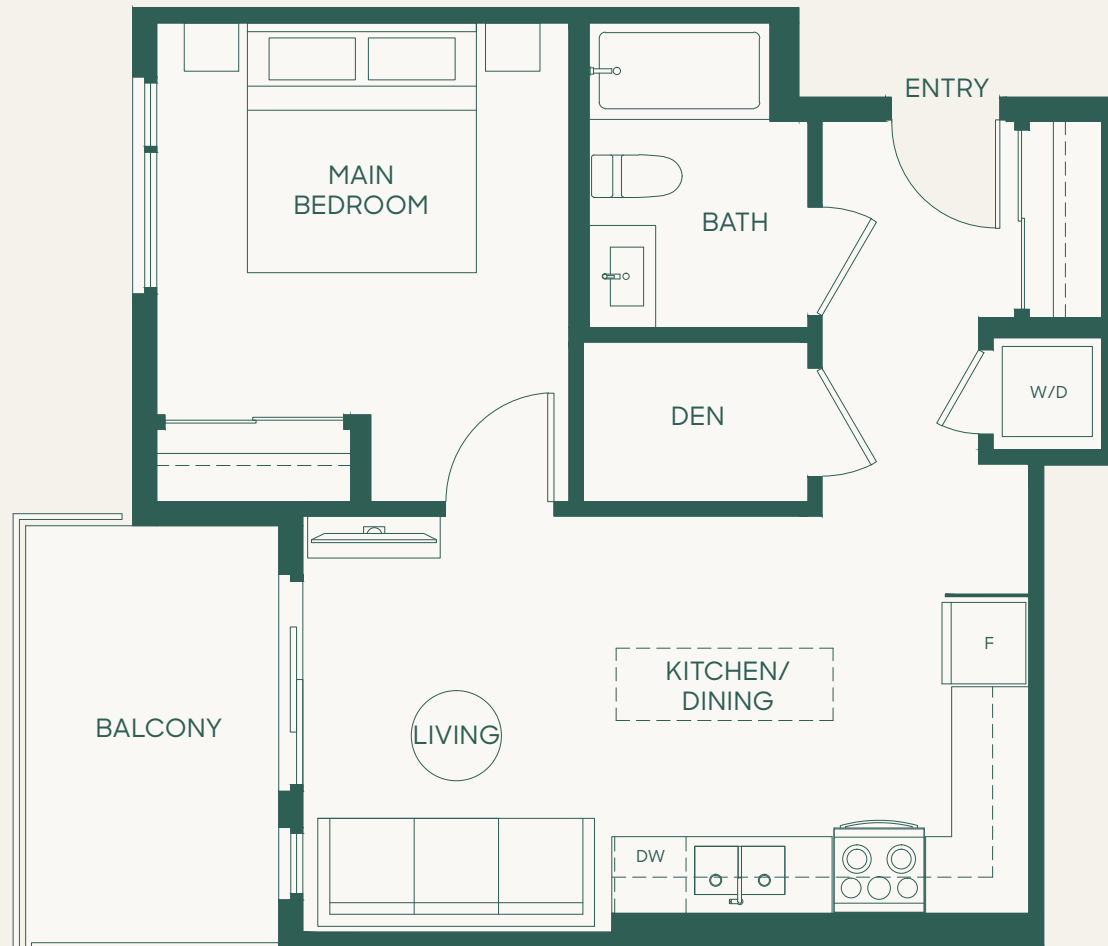
Plan A1

1 Bed + 1 Bath

Interior: 584 SF • Exterior: 188 SF

Total: 772 SF





Plan A2

1 Bed + Den + 1 Bath

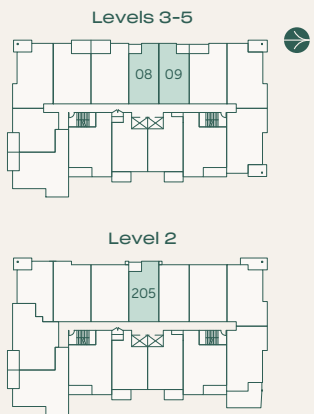
Interior: 614 SF • Exterior: 82 SF

Total: 696 SF

porte¹
homes

porte.ca/Hartley

In order to maintain a high standard for our homes, the developer reserves the right to modify specifications, plans or materials without notice. Images and/or renderings (and possible upgrades) may not be an exact representation of the finished buildings. Interior and exterior sizes are approximate and are subject to change. Renderings are artist's concept only. This is not an offering for sale, any such offering can only be made with a Disclosure Statement. E.&O.E.



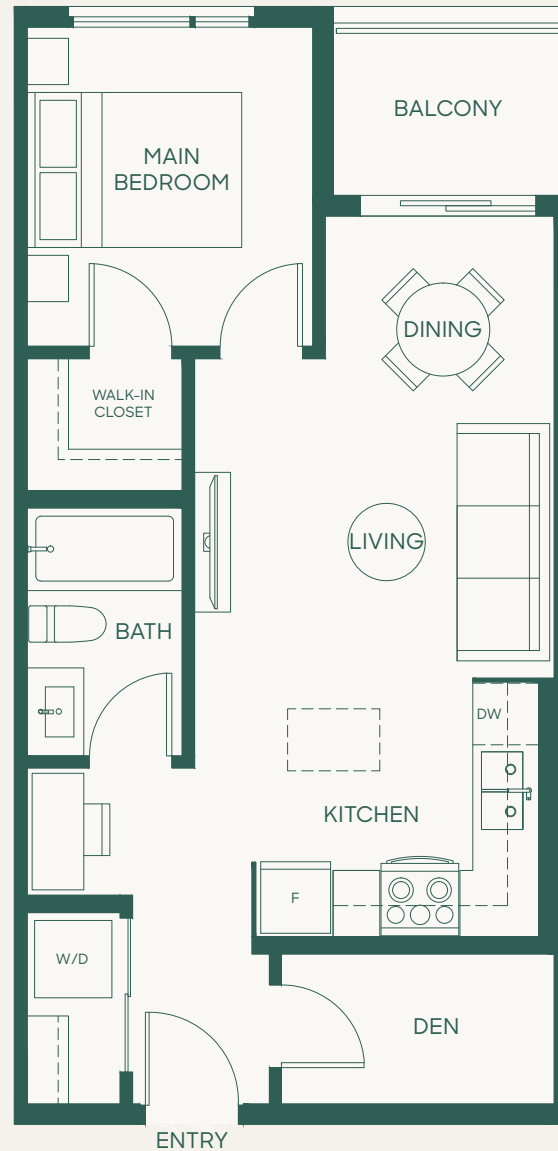
Homes 205, 308, 408, 508
are mirror plans.

Plan A4

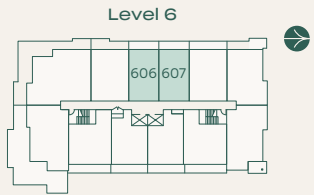
1 Bed + Den + 1 Bath

Interior: 598 SF • Exterior: 39–40 SF

Total: 637–638 SF



In order to maintain a high standard for our homes, the developer reserves the right to modify specifications, plans or materials without notice. Images and/or renderings (and possible upgrades) may not be an exact representation of the finished buildings. Interior and exterior sizes are approximate and are subject to change. Renderings are artist's concept only. This is not an offering for sale, any such offering can only be made with a Disclosure Statement. E.&O.E.



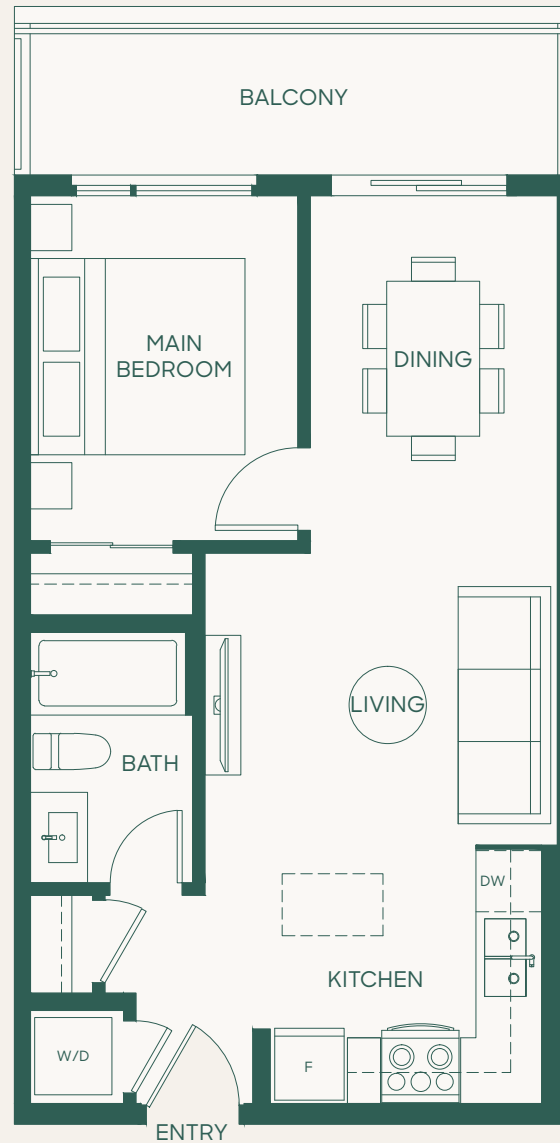
Home 607 is a mirror plan.

Plan A5

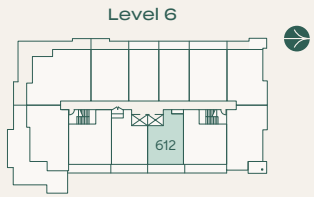
1 Bed + 1 Bath

Interior: 547 SF • Exterior: 88–89 SF

Total: 635–636 SF



In order to maintain a high standard for our homes, the developer reserves the right to modify specifications, plans or materials without notice. Images and/or renderings (and possible upgrades) may not be an exact representation of the finished buildings. Interior and exterior sizes are approximate and are subject to change. Renderings are artist's concept only. This is not an offering for sale, any such offering can only be made with a Disclosure Statement. E.&O.E.

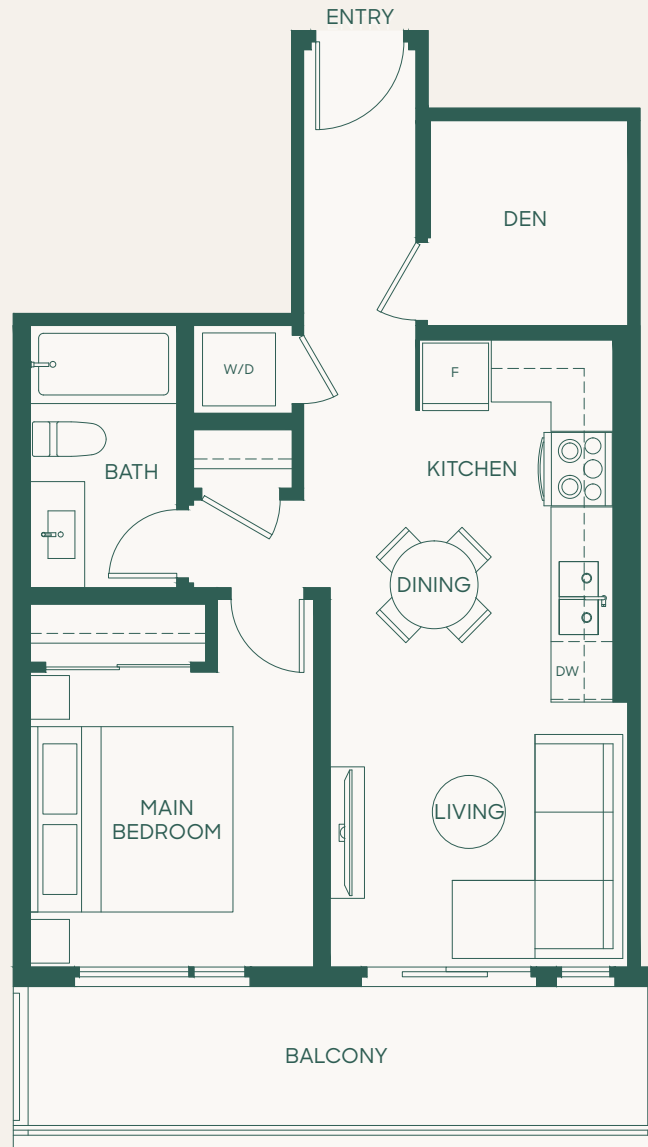


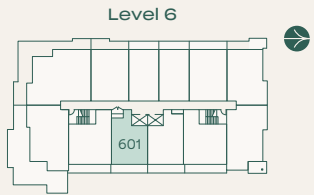
Plan B

1 Bed + Den + 1 Bath

Interior: 587 SF • Exterior: 104 SF

Total: 691 SF



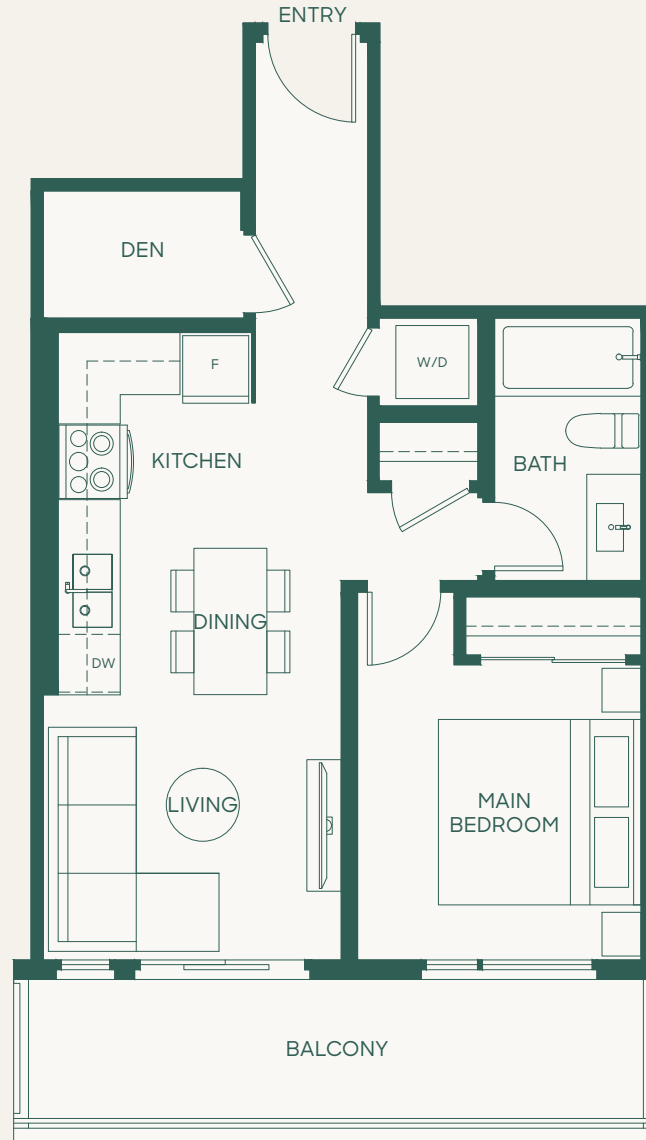


Plan Ba

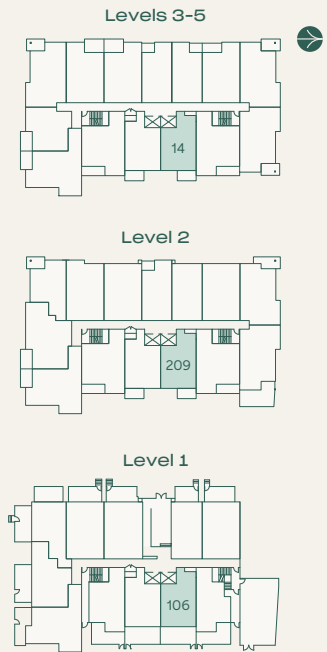
1 Bed + Den + 1 Bath

Interior: 567 SF • Exterior: 104 SF

Total: 671 SF



In order to maintain a high standard for our homes, the developer reserves the right to modify specifications, plans or materials without notice. Images and/or renderings (and possible upgrades) may not be an exact representation of the finished buildings. Interior and exterior sizes are approximate and are subject to change. Renderings are artist's concept only. This is not an offering for sale, any such offering can only be made with a Disclosure Statement. E.&O.E.

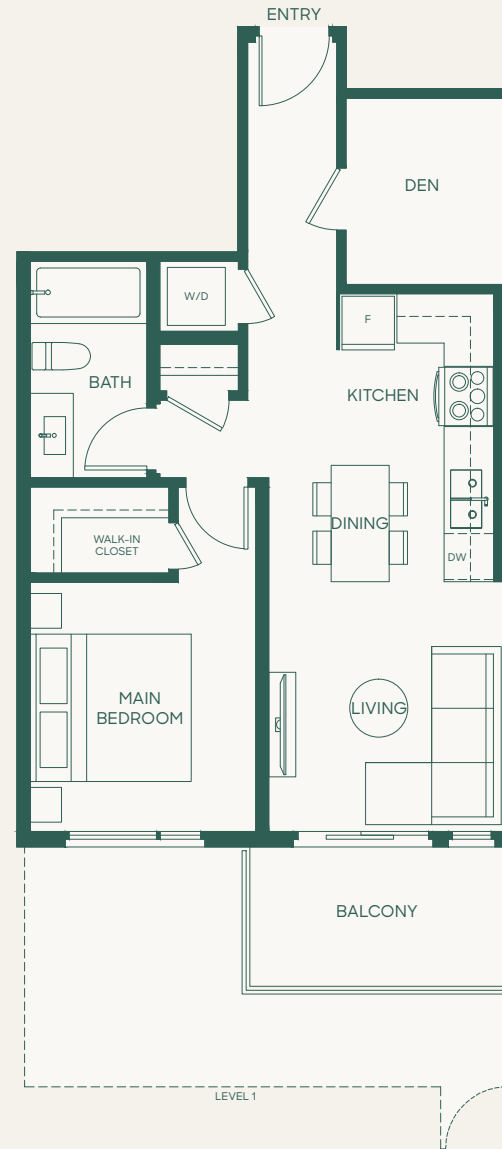


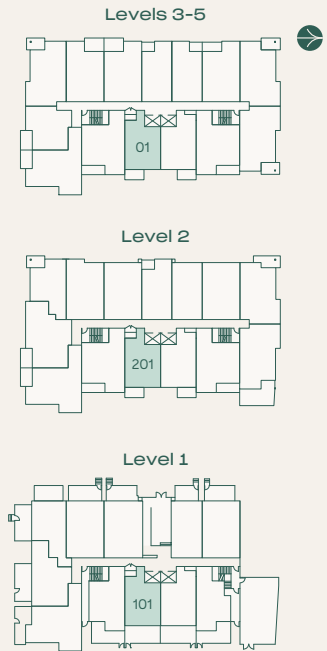
Plan B1

1 Bed + Den + 1 Bath

Interior: 642 SF • Exterior: 68–211 SF

Total: 710–853 SF



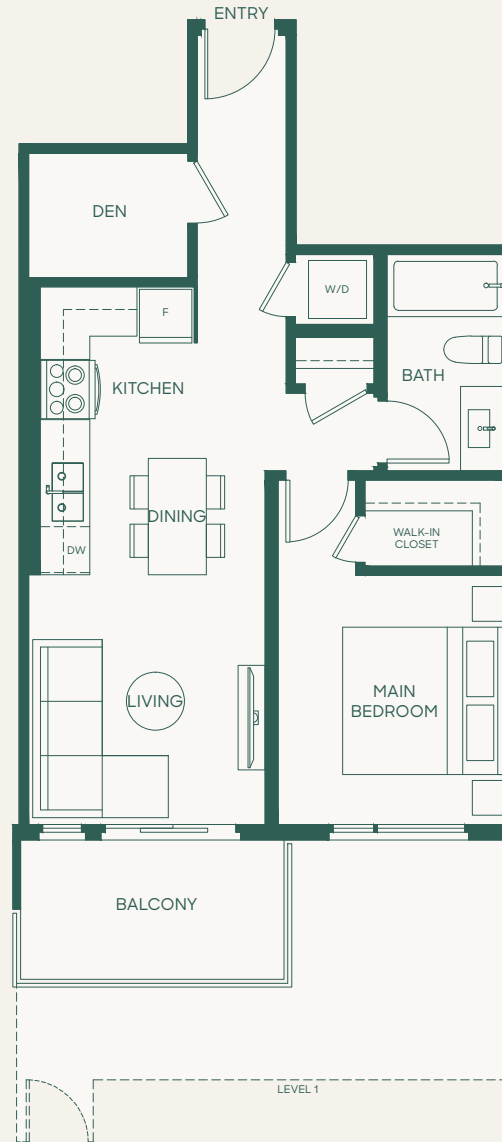


Plan B1a

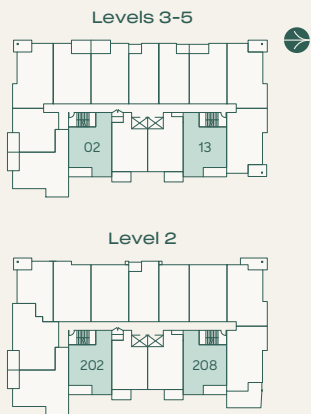
1 Bed + Den + 1 Bath

Interior: 622 SF • Exterior: 68–213 SF

Total: 690–835 SF



In order to maintain a high standard for our homes, the developer reserves the right to modify specifications, plans or materials without notice. Images and/or renderings (and possible upgrades) may not be an exact representation of the finished buildings. Interior and exterior sizes are approximate and are subject to change. Renderings are artist's concept only. This is not an offering for sale, any such offering can only be made with a Disclosure Statement. E.&O.E.



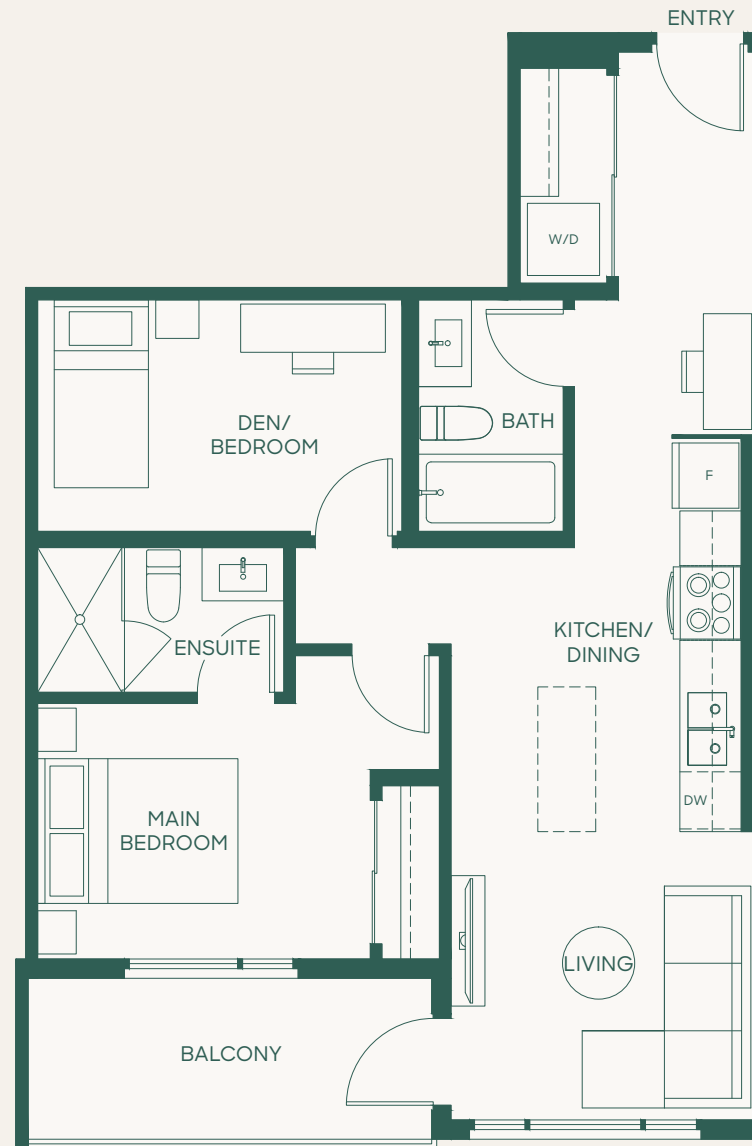
Homes 208, 313, 413, 513
are mirror plans.

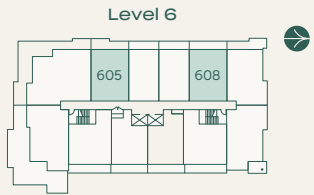
Plan B2

Jr. 2 Bed + 2 Bath

Interior: 755 SF • Exterior: 77 SF

Total: 832 SF





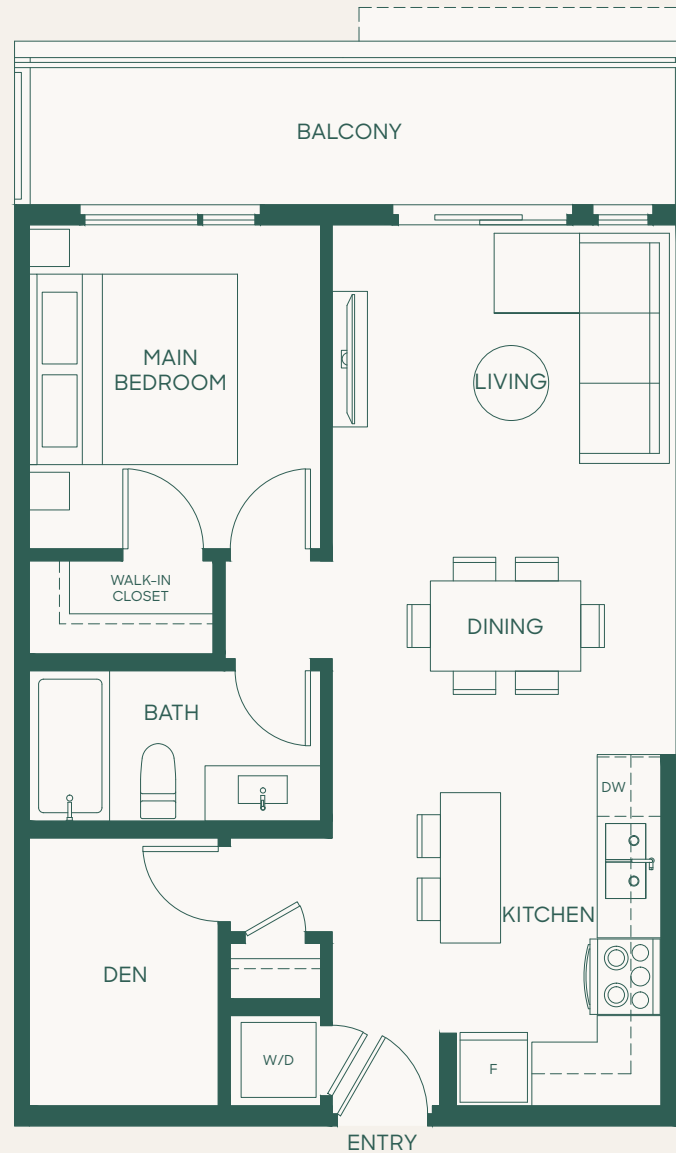
Home 605 is a mirror plan.

Plan B3

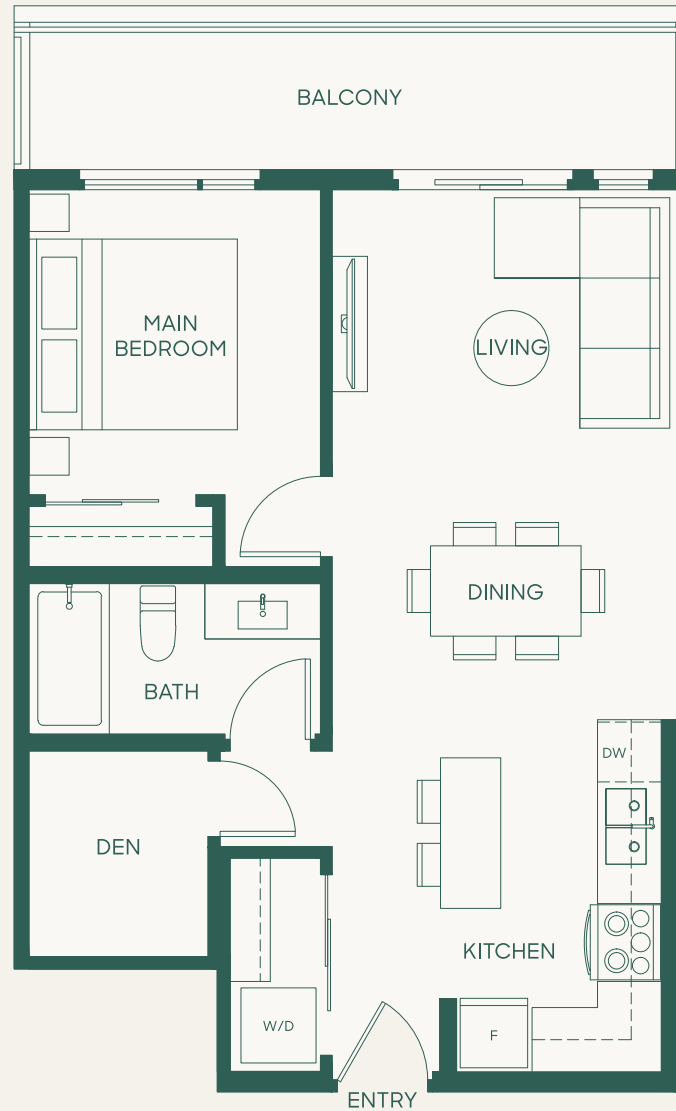
1 Bed + Den + 1 Bath

Interior: 684 SF • Exterior: 110 – 125 SF

Total: 794 – 809 SF



In order to maintain a high standard for our homes, the developer reserves the right to modify specifications, plans or materials without notice. Images and/or renderings (and possible upgrades) may not be an exact representation of the finished buildings. Interior and exterior sizes are approximate and are subject to change. Renderings are artist's concept only. This is not an offering for sale, any such offering can only be made with a Disclosure Statement. E.&O.E.



Plan B3a

1 Bed + Den + 1 Bath

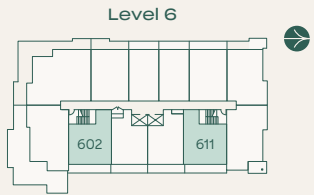
Interior: 684 SF • Exterior: 110 SF

Total: 794 SF

porte⁷
homes

porte.ca/Hartley

In order to maintain a high standard for our homes, the developer reserves the right to modify specifications, plans or materials without notice. Images and/or renderings (and possible upgrades) may not be an exact representation of the finished buildings. Interior and exterior sizes are approximate and are subject to change. Renderings are artist's concept only. This is not an offering for sale, any such offering can only be made with a Disclosure Statement. E.&O.E.



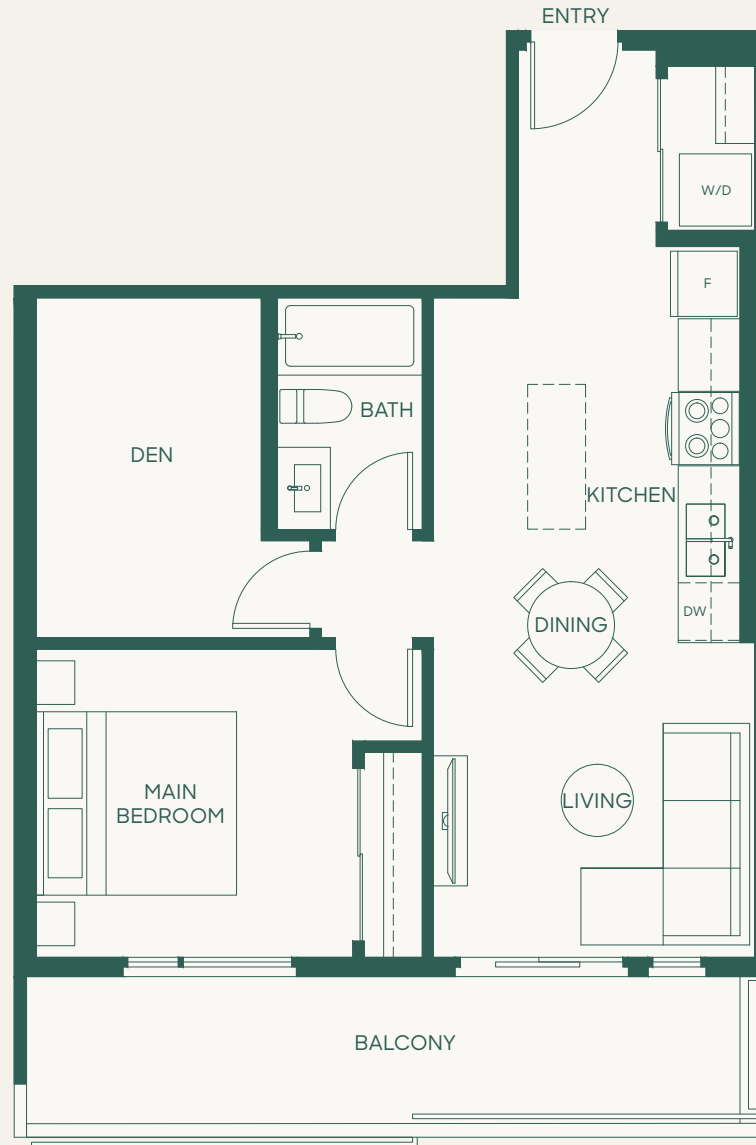
Home 611 is a mirror plan.

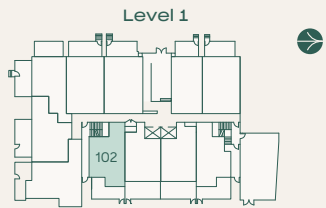
Plan B4

1 Bed + Den + 1 Bath

Interior: 690 SF • Exterior: 119 SF

Total: 809 SF



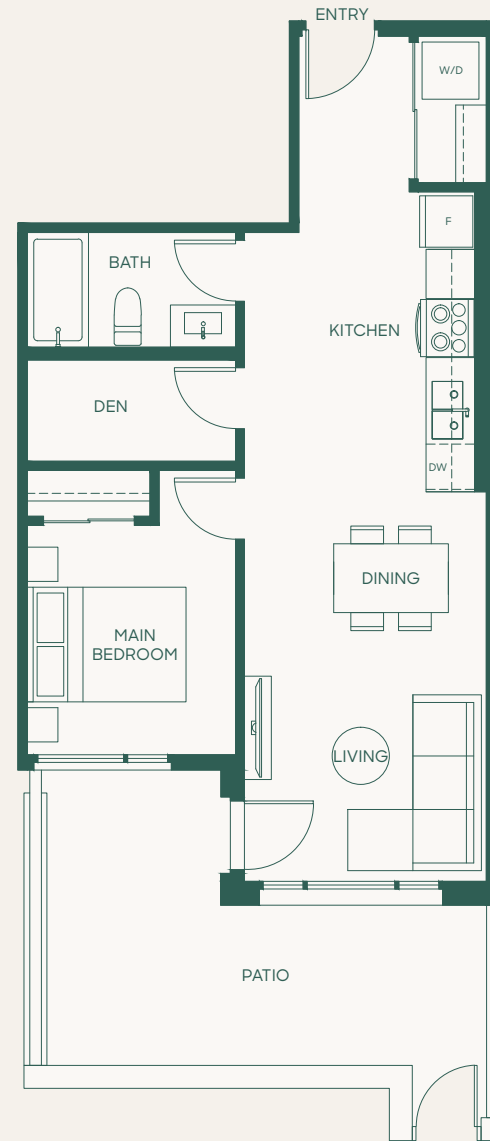


Plan B5

1 Bed + Den + 1 Bath

Interior: 636 SF • Exterior: 188 SF

Total: 824 SF





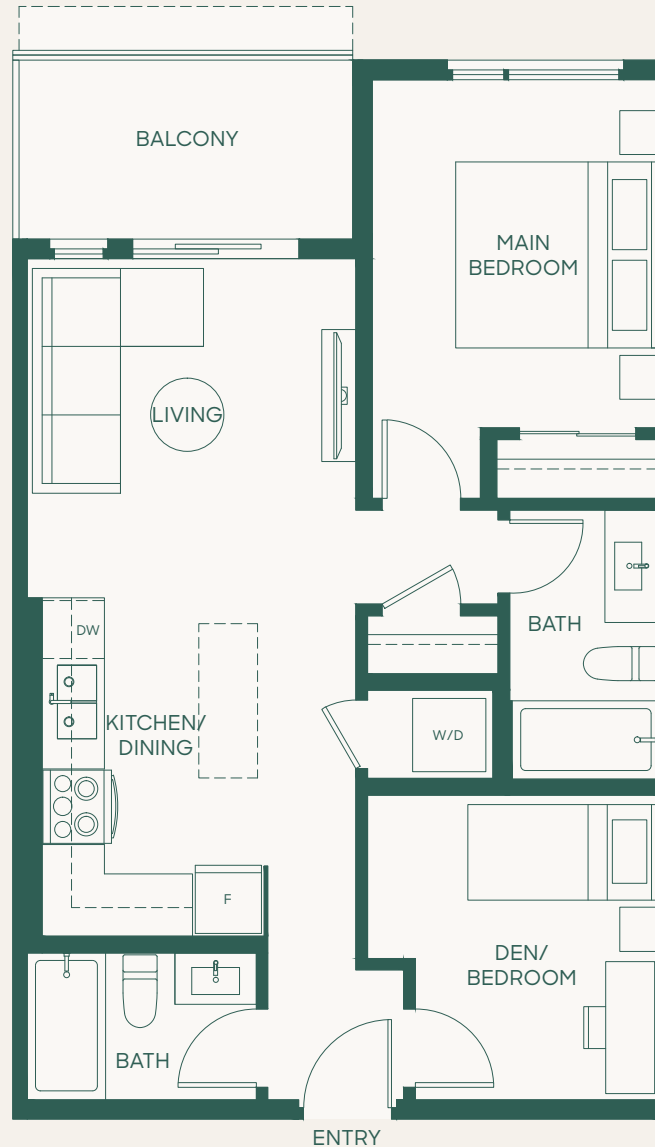
Homes 306, 406, 506
are mirror plans.

Plan B6

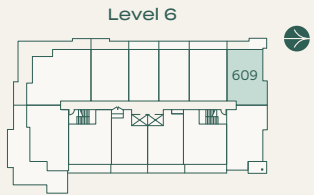
Jr. 2 Bed + 2 Bath

Interior: 735 SF • Exterior: 81-92 SF

Total: 816-827 SF



In order to maintain a high standard for our homes, the developer reserves the right to modify specifications, plans or materials without notice. Images and/or renderings (and possible upgrades) may not be an exact representation of the finished buildings. Interior and exterior sizes are approximate and are subject to change. Renderings are artist's concept only. This is not an offering for sale, any such offering can only be made with a Disclosure Statement. E.&O.E.

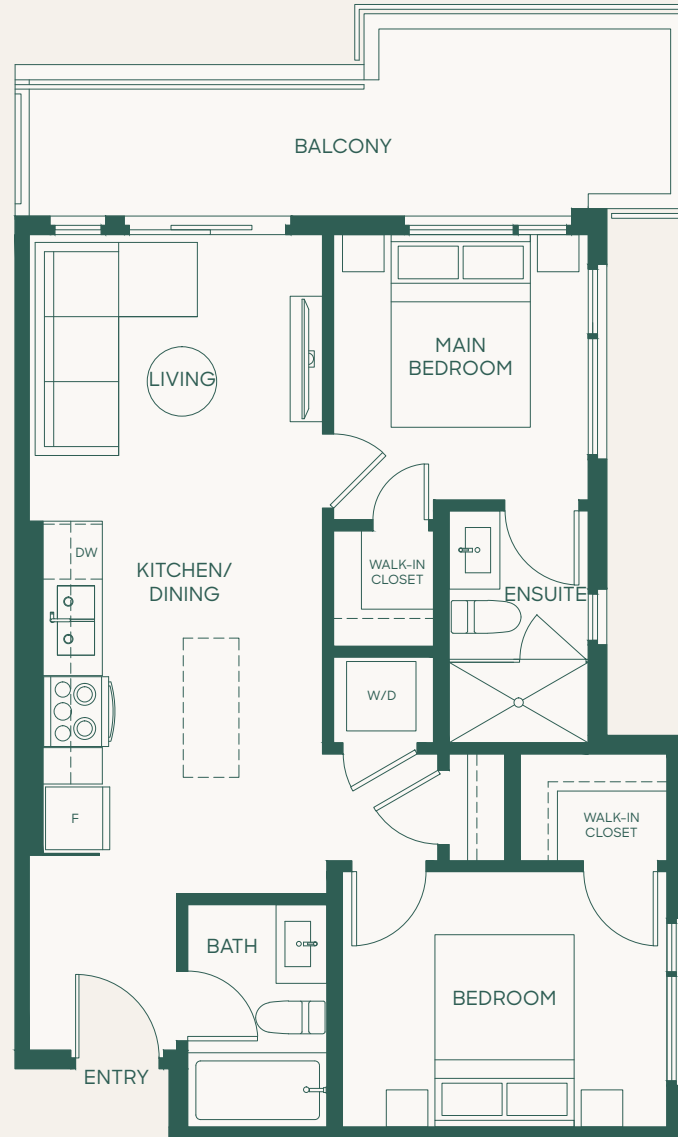


Plan C

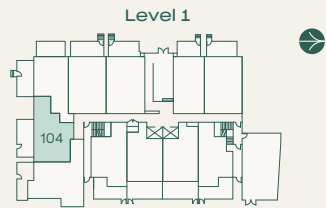
2 Bed + 2 Bath

Interior: 728 SF • Exterior: 132 SF

Total: 860 SF



In order to maintain a high standard for our homes, the developer reserves the right to modify specifications, plans or materials without notice. Images and/or renderings (and possible upgrades) may not be an exact representation of the finished buildings. Interior and exterior sizes are approximate and are subject to change. Renderings are artist's concept only. This is not an offering for sale, any such offering can only be made with a Disclosure Statement. E.&O.E.



Plan C2

2 Bed + 2 Bath

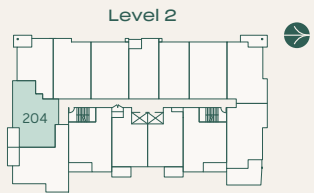
Interior: 698 SF • Exterior: 254 SF

Total: 952 SF

porte¹
homes

porte.ca/Hartley

In order to maintain a high standard for our homes, the developer reserves the right to modify specifications, plans or materials without notice. Images and/or renderings (and possible upgrades) may not be an exact representation of the finished buildings. Interior and exterior sizes are approximate and are subject to change. Renderings are artist's concept only. This is not an offering for sale, any such offering can only be made with a Disclosure Statement. E.&O.E.

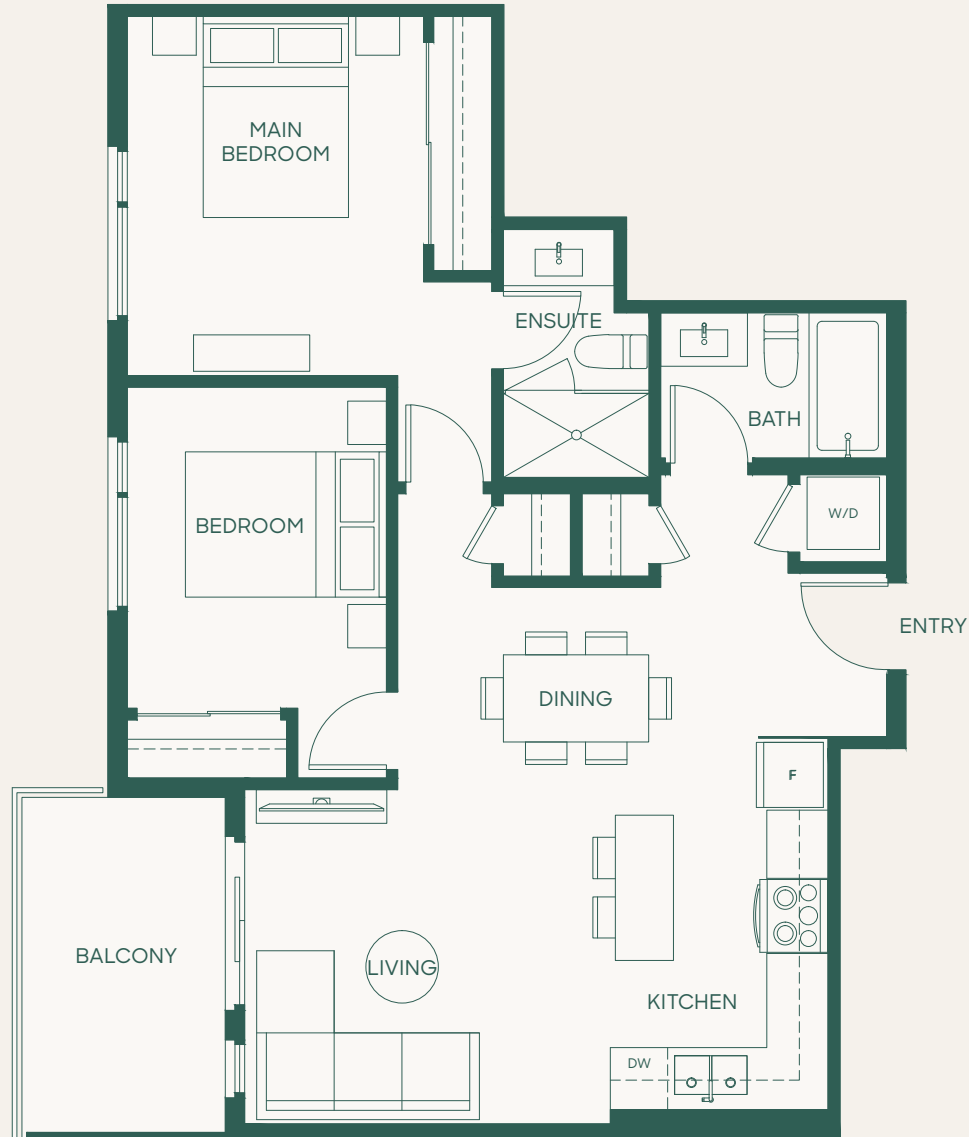


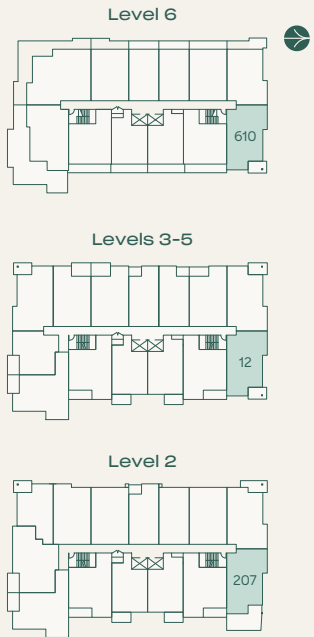
Plan C3

2 Bed + 2 Bath

Interior: 864 SF • Exterior: 82 SF

Total: 946 SF



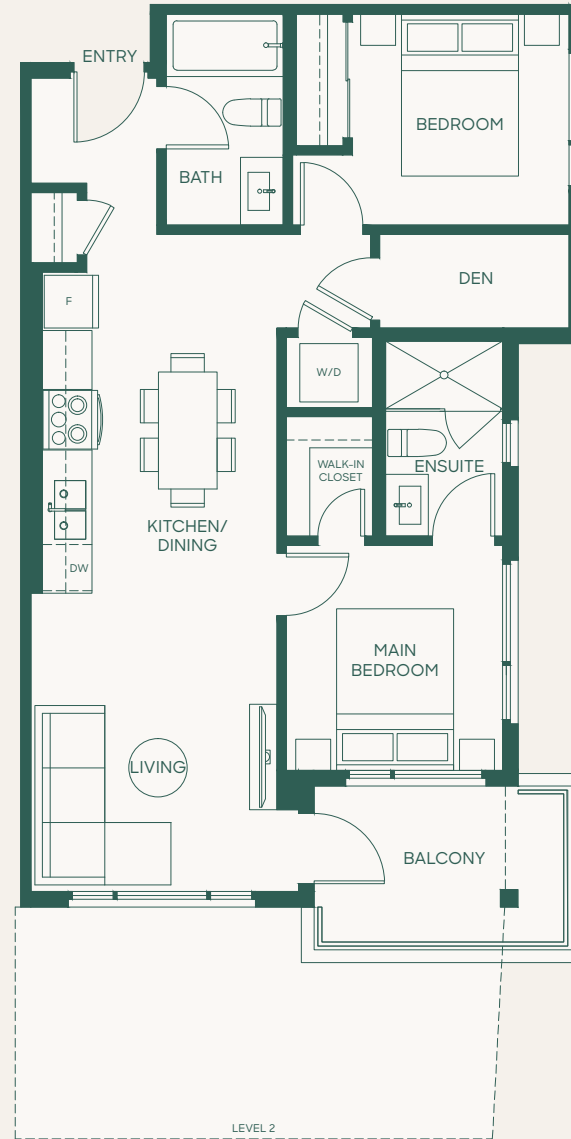


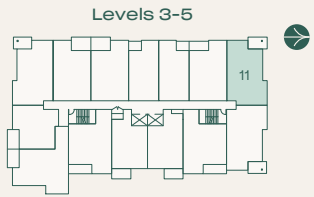
Plan C4

2 Bed + Den + 2 Bath

Interior: 802 SF • Exterior: 71-229 SF

Total: 873-1013 SF



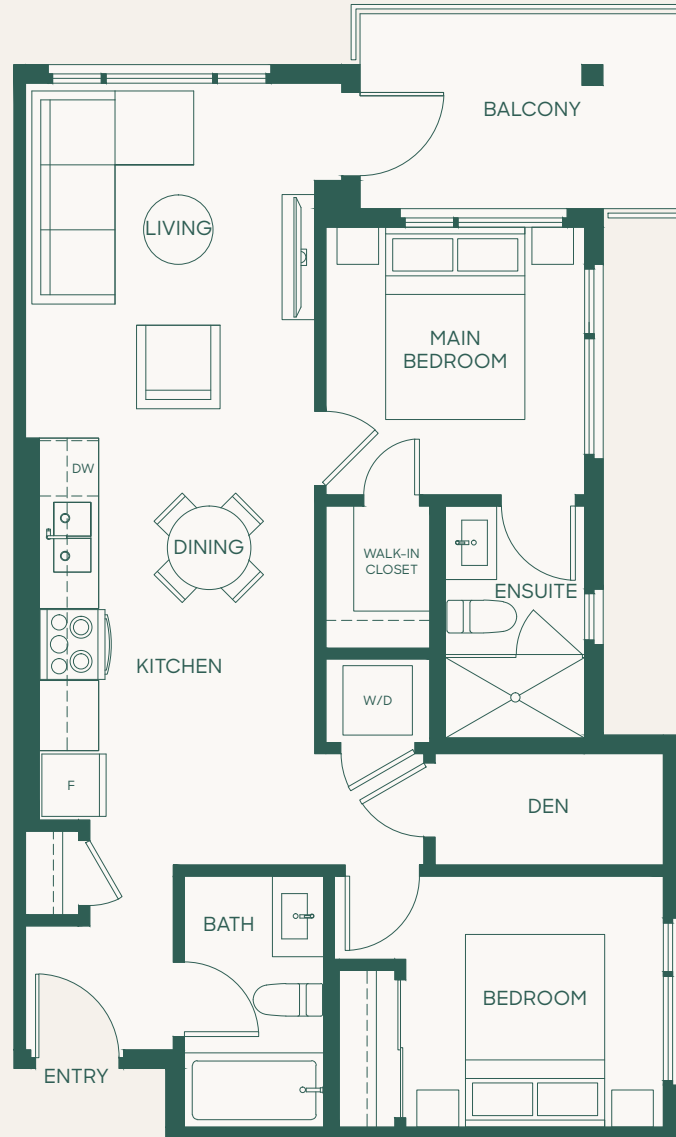


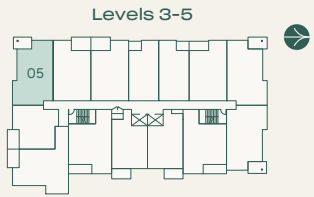
Plan C4a

2 Bed + Den + 2 Bath

Interior: 799 SF • Exterior: 81 SF

Total: 880 SF



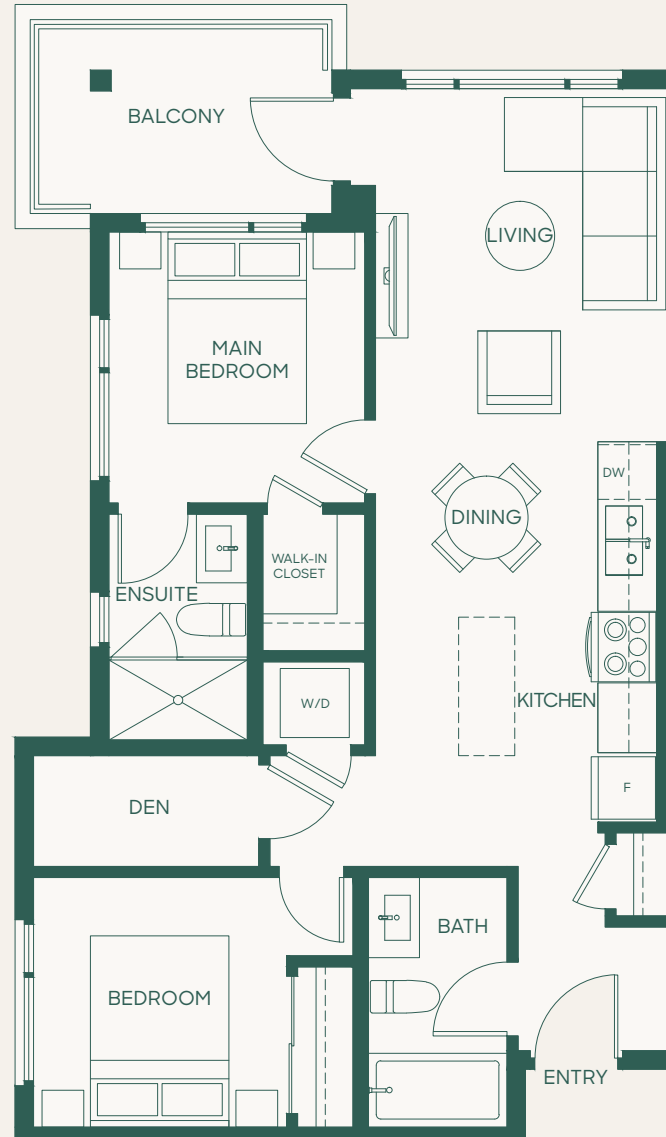


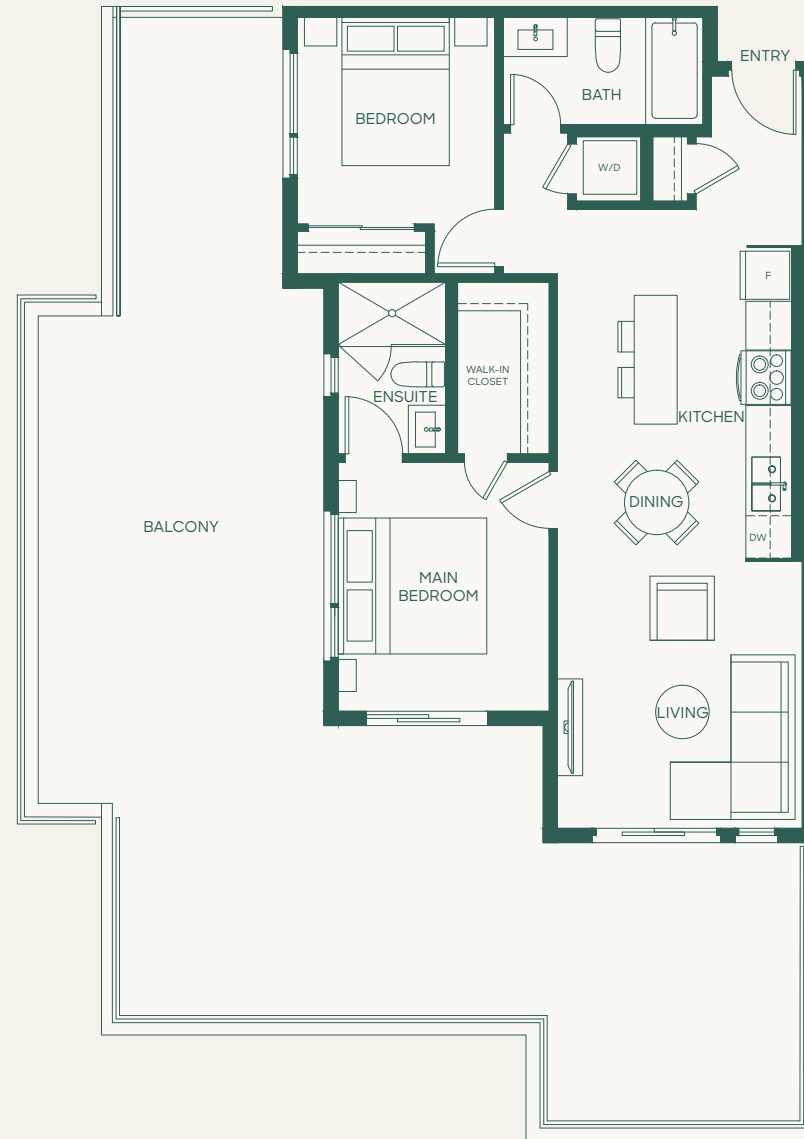
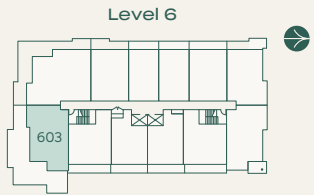
Plan C4b

2 Bed + Den + 2 Bath

Interior: 803 SF • Exterior: 76 SF

Total: 879 SF



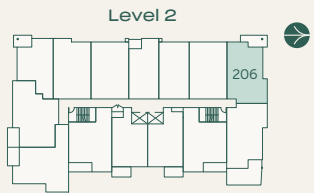


Plan C4c

2 Bed + 2 Bath

Interior: 840 SF • Exterior: 800 SF

Total: 1640 SF

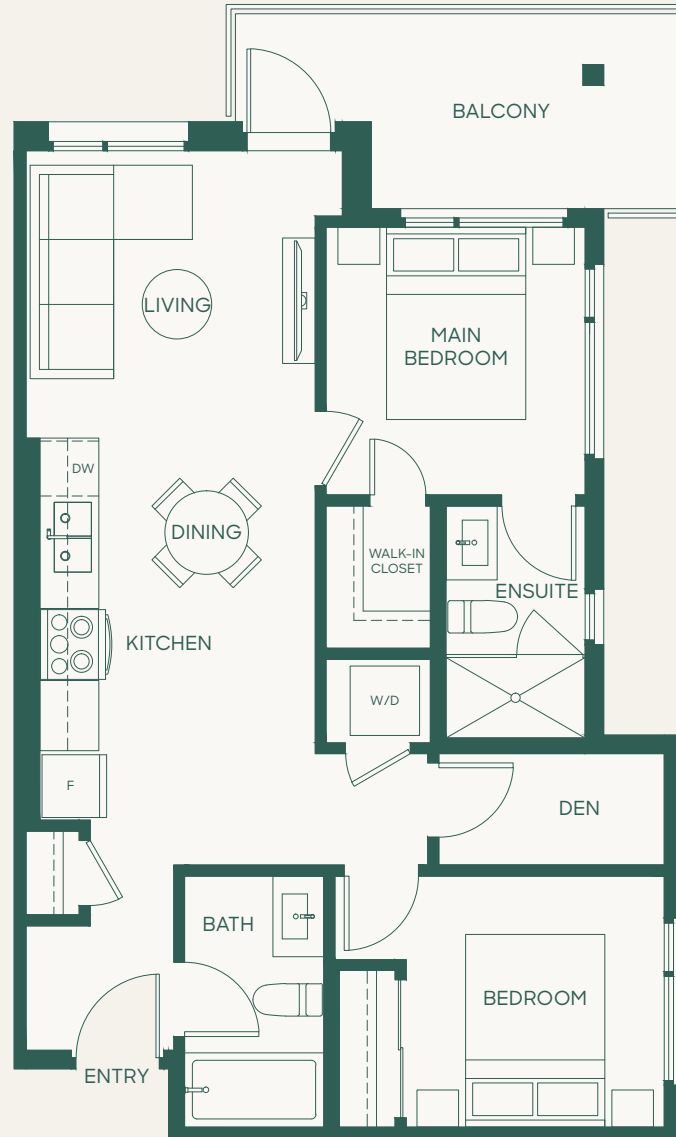


Plan C4e

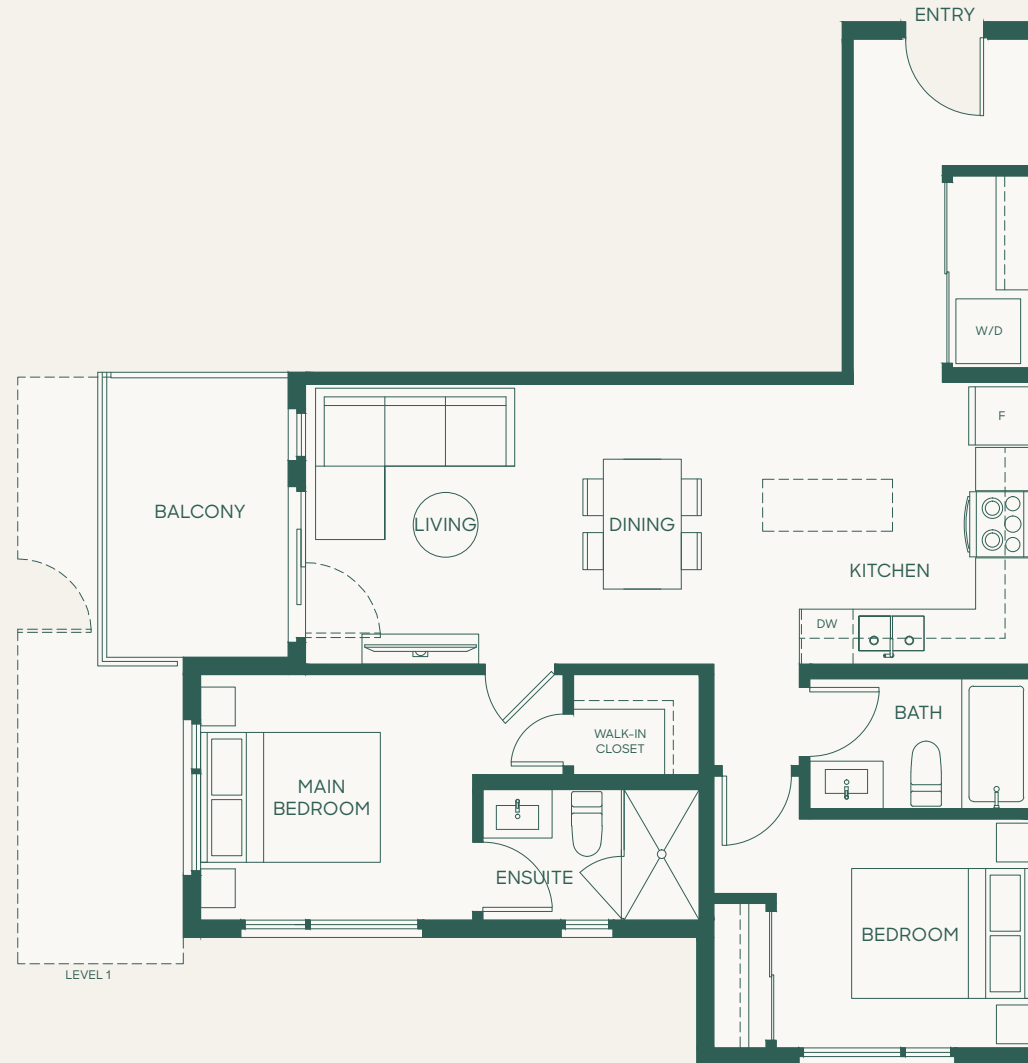
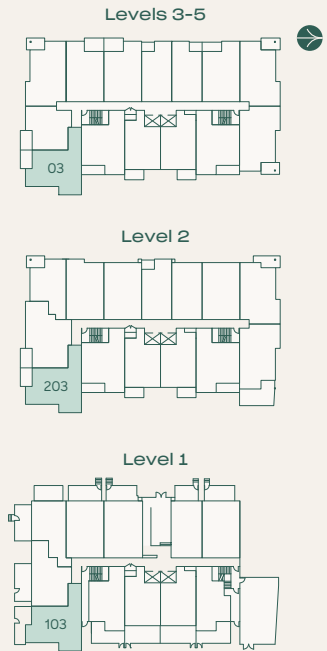
2 Bed + Den + 2 Bath

Interior: 767 SF • Exterior: 97 SF

Total: 864 SF



In order to maintain a high standard for our homes, the developer reserves the right to modify specifications, plans or materials without notice. Images and/or renderings (and possible upgrades) may not be an exact representation of the finished buildings. Interior and exterior sizes are approximate and are subject to change. Renderings are artist's concept only. This is not an offering for sale, any such offering can only be made with a Disclosure Statement. E.&O.E.



Plan C6

2 Bed + 2 Bath

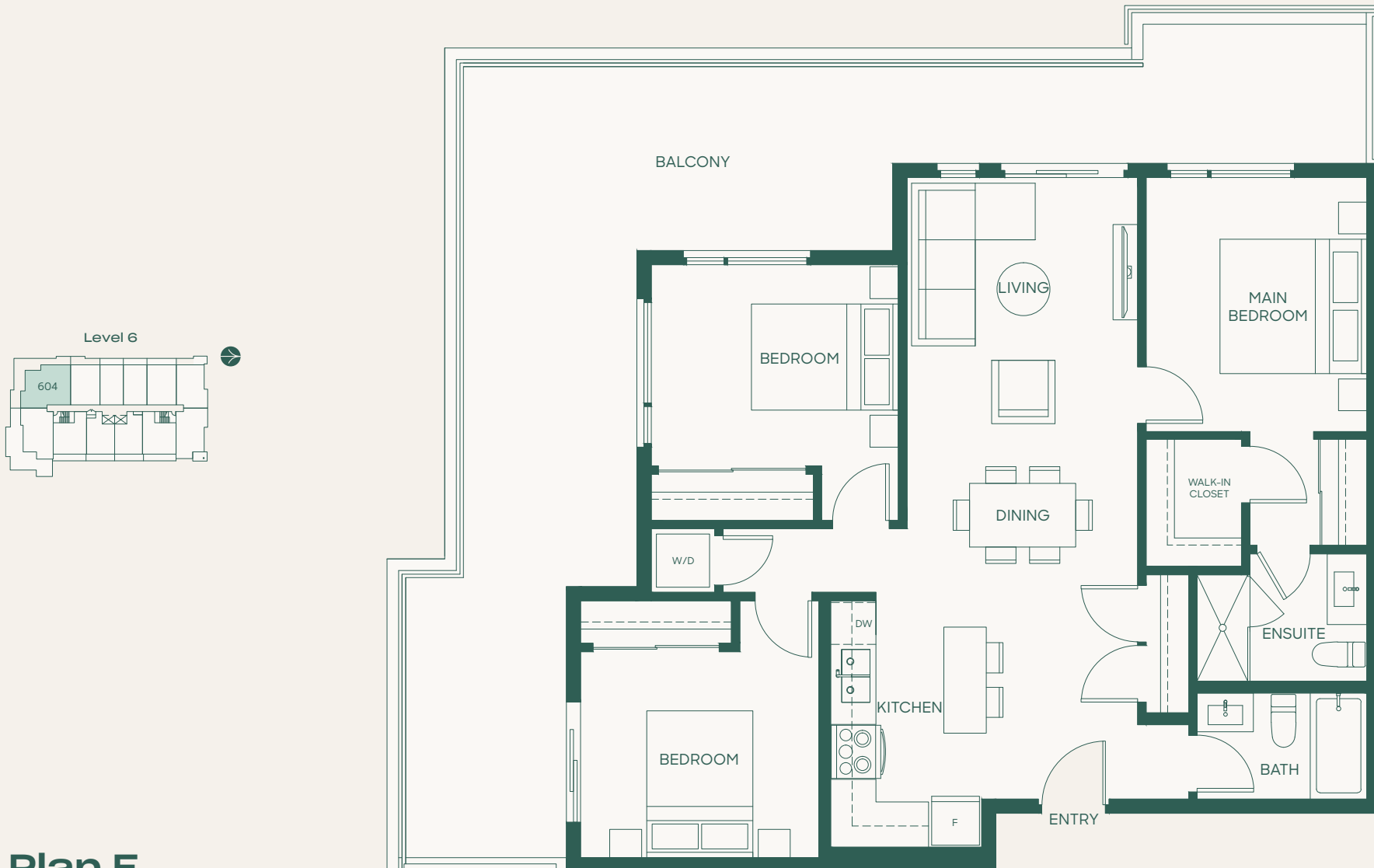
Interior: 844 SF • Exterior: 77-185 SF

Total: 921-1029 SF

porte¹
homes

porte.ca/Hartley

In order to maintain a high standard for our homes, the developer reserves the right to modify specifications, plans or materials without notice. Images and/or renderings (and possible upgrades) may not be an exact representation of the finished buildings. Interior and exterior sizes are approximate and are subject to change. Renderings are artist's concept only. This is not an offering for sale, any such offering can only be made with a Disclosure Statement. E.&O.E.



Plan E

3 Bed + 2 Bath

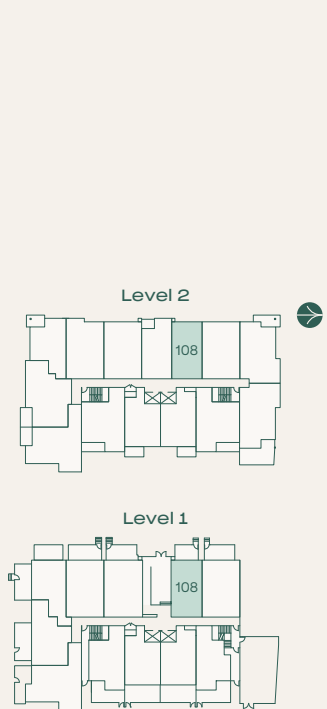
Interior: 1099 SF • Exterior: 533 SF

Total: 1632 SF

porte⁷
homes

porte.ca/Hartley

In order to maintain a high standard for our homes, the developer reserves the right to modify specifications, plans or materials without notice. Images and/or renderings (and possible upgrades) may not be an exact representation of the finished buildings. Interior and exterior sizes are approximate and are subject to change. Renderings are artist's concept only. This is not an offering for sale, any such offering can only be made with a Disclosure Statement. E.&O.E.

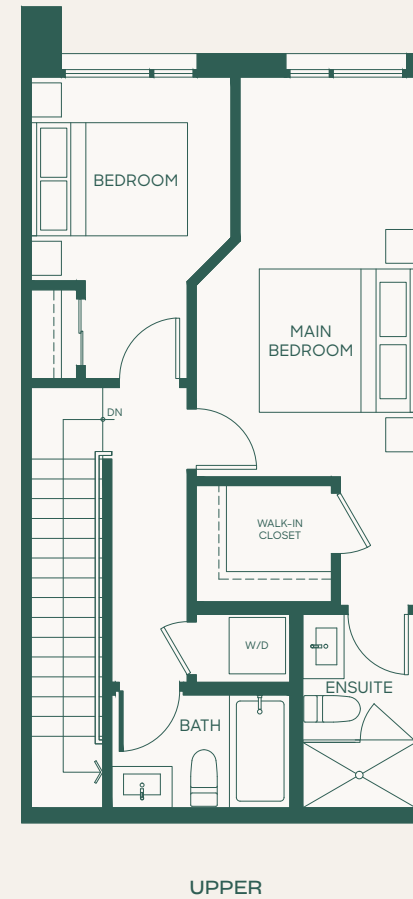
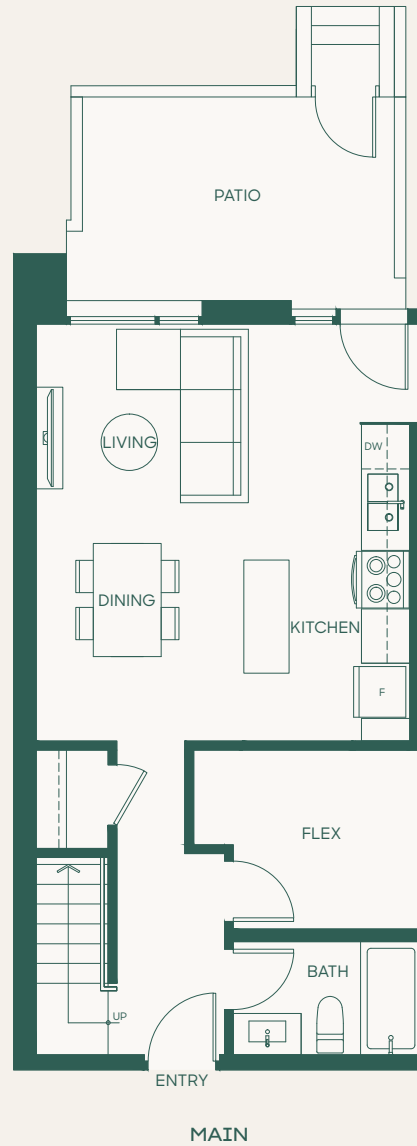


Plan F

2 Bed + Flex + 3 Bath

Interior: 1203 SF • Exterior: 139 SF

Total: 1342 SF



In order to maintain a high standard for our homes, the developer reserves the right to modify specifications, plans or materials without notice. Images and/or renderings (and possible upgrades) may not be an exact representation of the finished buildings. Interior and exterior sizes are approximate and are subject to change. Renderings are artist's concept only. This is not an offering for sale, any such offering can only be made with a Disclosure Statement. E.&O.E.



Plan F1a

2 Bed + 2.5 Bath

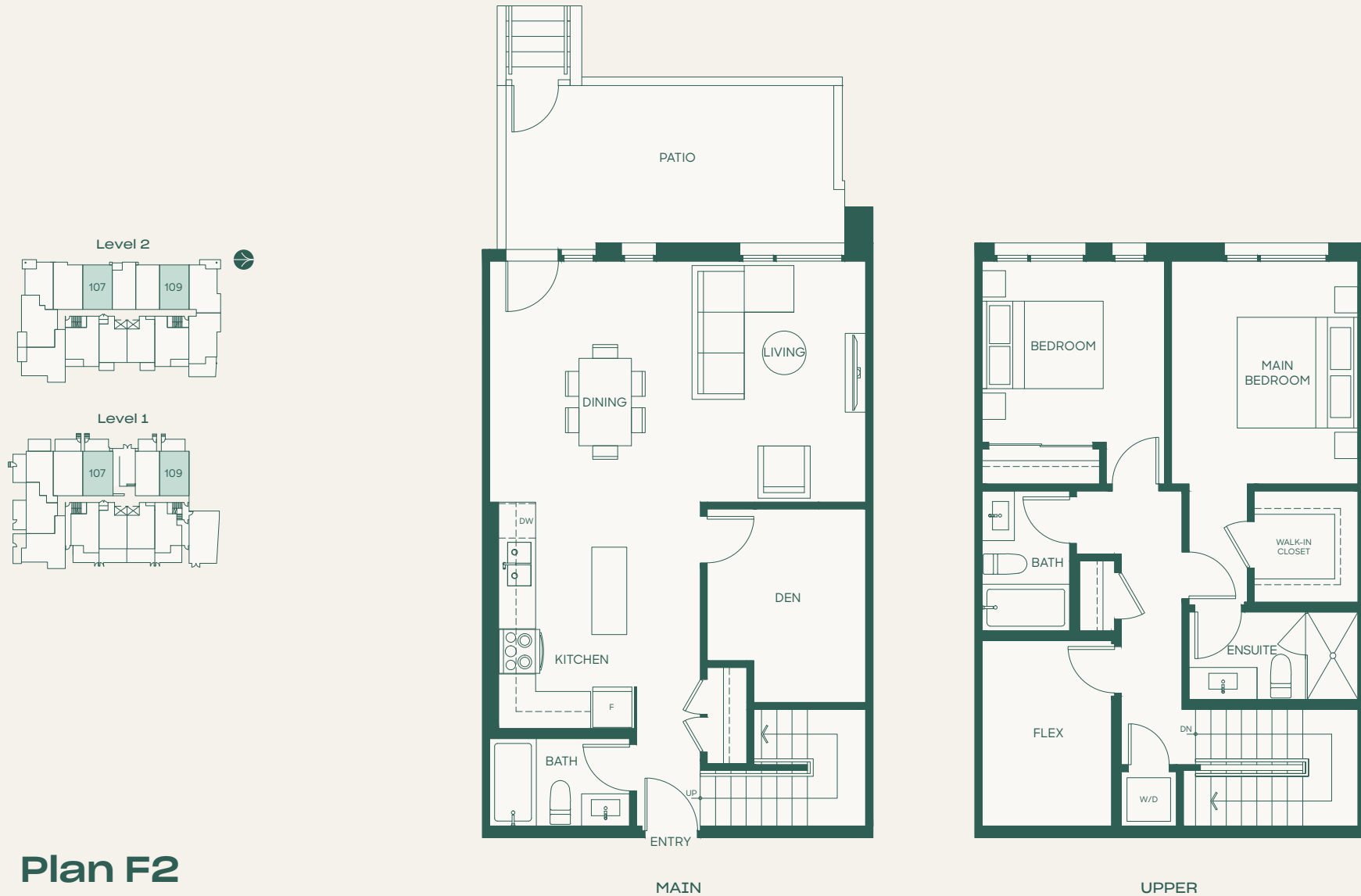
Interior: 1213 SF • Exterior: 172 SF

Total: 1385 SF

porte¹
homes

porte.ca/Hartley

In order to maintain a high standard for our homes, the developer reserves the right to modify specifications, plans or materials without notice. Images and/or renderings (and possible upgrades) may not be an exact representation of the finished buildings. Interior and exterior sizes are approximate and are subject to change. Renderings are artist's concept only. This is not an offering for sale, any such offering can only be made with a Disclosure Statement. E.&O.E.



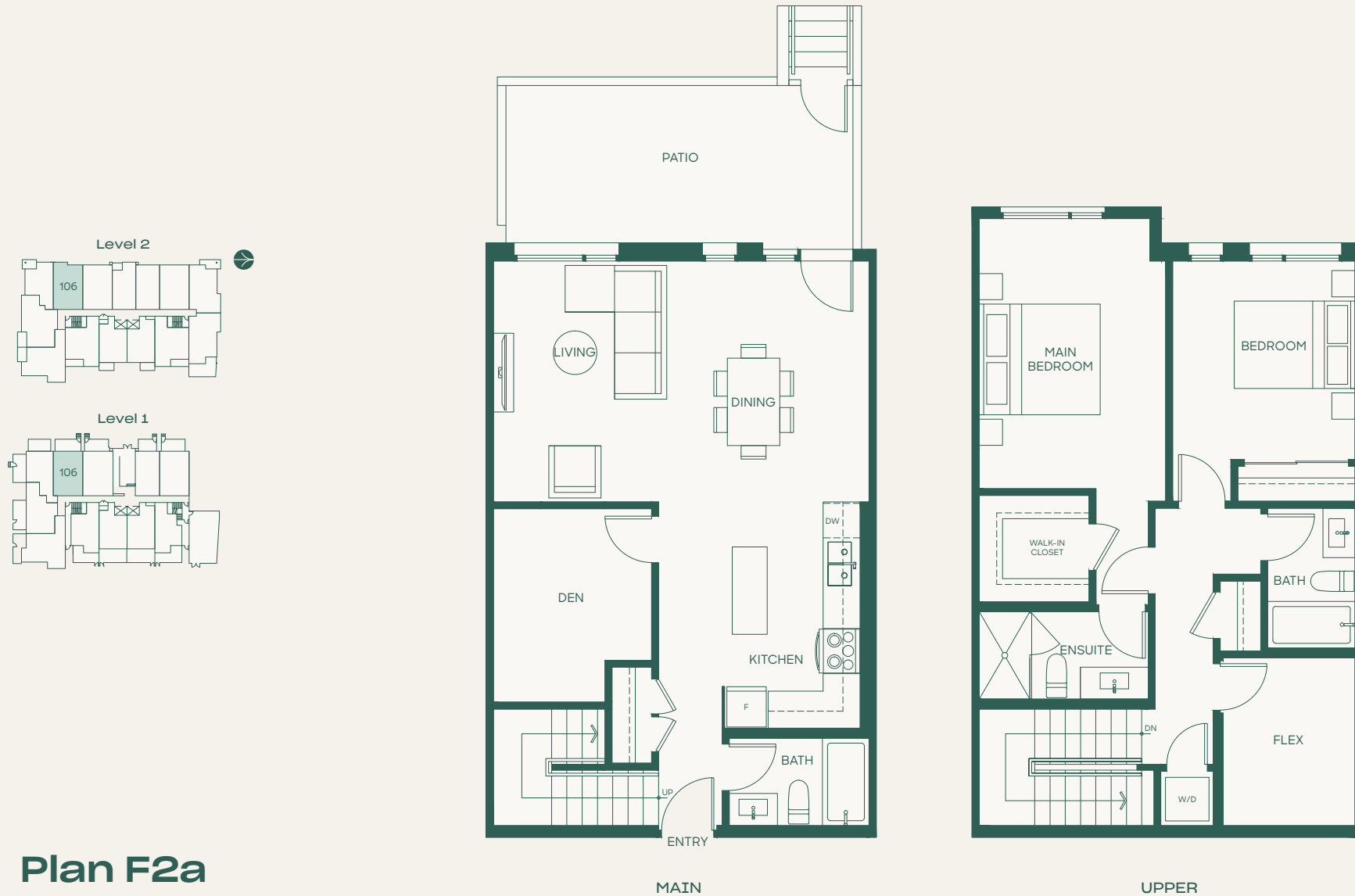
Plan F2

2 Bed + Den + Flex + 3 Bath

Interior: 1503 SF • Exterior: 174-185 SF

Total: 1677-1688 SF

In order to maintain a high standard for our homes, the developer reserves the right to modify specifications, plans or materials without notice. Images and/or renderings (and possible upgrades) may not be an exact representation of the finished buildings. Interior and exterior sizes are approximate and are subject to change. Renderings are artist's concept only. This is not an offering for sale, any such offering can only be made with a Disclosure Statement. E.&O.E.



Plan F2a

2 Bed + Den + Flex + 3 Bath

Interior: 1530 SF • Exterior: 200 SF

Total: 1730 SF

In order to maintain a high standard for our homes, the developer reserves the right to modify specifications, plans or materials without notice. Images and/or renderings (and possible upgrades) may not be an exact representation of the finished buildings. Interior and exterior sizes are approximate and are subject to change. Renderings are artist's concept only. This is not an offering for sale, any such offering can only be made with a Disclosure Statement. E.&O.E.